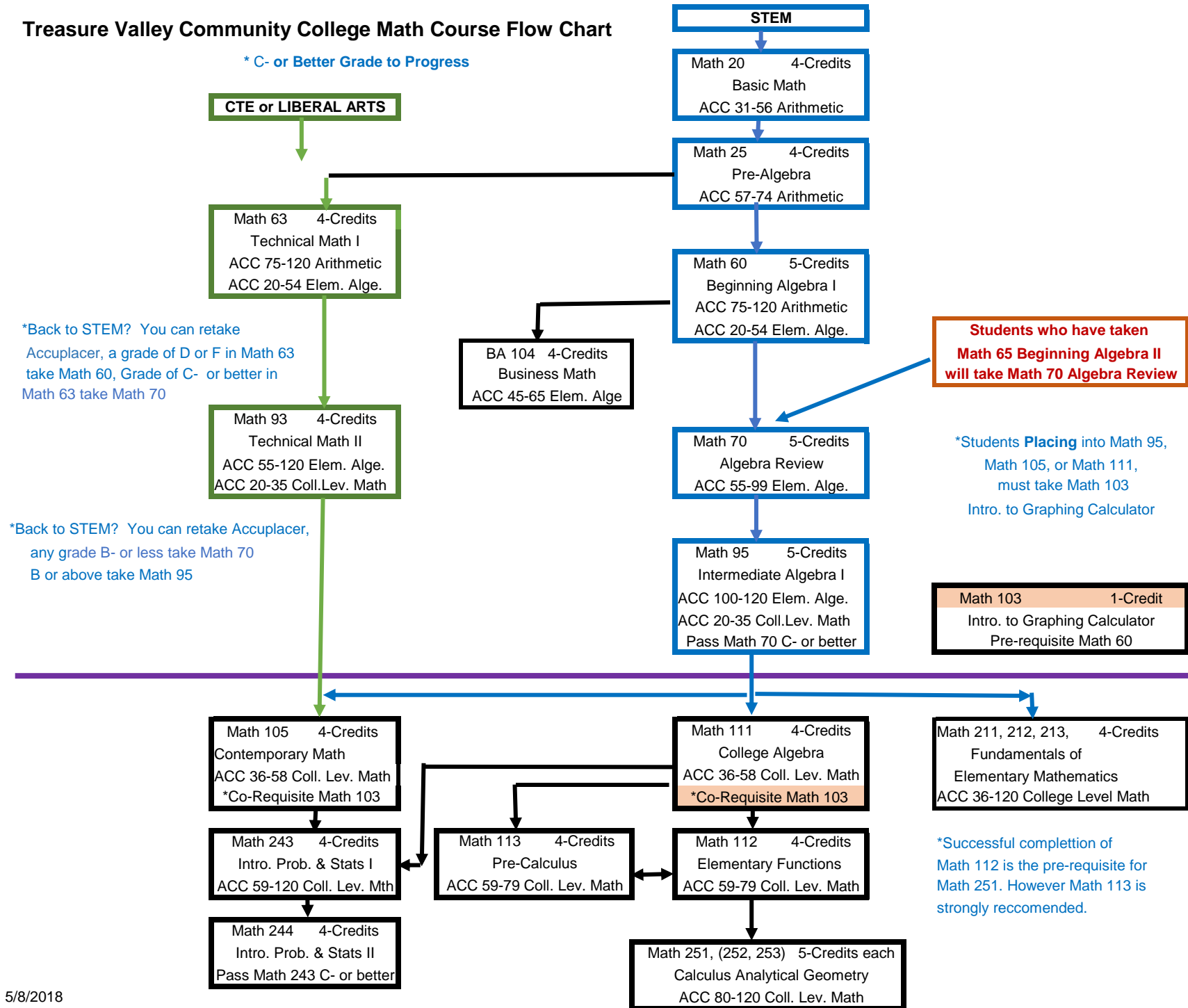


Treasure Valley Community College Math Course Flow Chart

* C- or Better Grade to Progress



*Back to STEM? You can retake Accuplacer, a grade of D or F in Math 63 take Math 60, Grade of C- or better in Math 63 take Math 70

*Back to STEM? You can retake Accuplacer, any grade B- or less take Math 70 B or above take Math 95

Students who have taken Math 65 Beginning Algebra II will take Math 70 Algebra Review

*Students Placing into Math 95, Math 105, or Math 111, must take Math 103 Intro. to Graphing Calculator

Math 103 1-Credit Intro. to Graphing Calculator Pre-requisite Math 60

Math 211, 212, 213, 4-Credits Fundamentals of Elementary Mathematics ACC 36-120 College Level Math

*Successful completion of Math 112 is the pre-requisite for Math 251. However Math 113 is strongly recommended.